



**okura**

## ■ Specifications

Belt Widths BW (mm)	200	300	400	500		
Frame Width FW (mm)	475	575	675	775		
Lengths (mm)	NA					
Available speed range (m/min)	0.8 ~ 30					
Carrier Frame Construction	Mile steel painted					
Motor Types	40,60,90 watt 110 + 230v/1 phase 40,60,90 watt 230v/3phase 40,60,90 watt 400v/3phase					
Control Box Types	- Fixed speed stop/start - Variable speed stop/start with speed variation knob					
Drive Position	Below carrier frame					
Standard Guided Belt Types	1 or 2 Ply Green or White PU, 1 Ply Green high duty grip face 1 Ply PVC Diamond grey grip face.					
Standard Guides	25x13x3mm anodised aluminium angle fixed and adjustable side guides. (see overleaf)					
Max. load (kg)	50BW	75BW	100 ~ 600BW	13	20	30

## ■ Capacity Graph

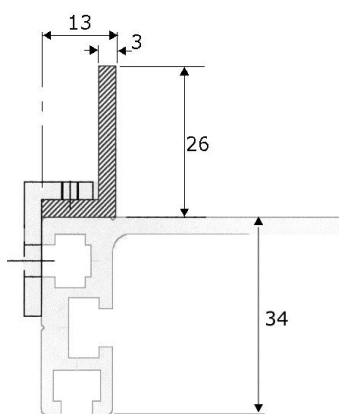
[www.conveyors.ie](http://www.conveyors.ie) [www.lvpconveyors.co.uk](http://www.lvpconveyors.co.uk)



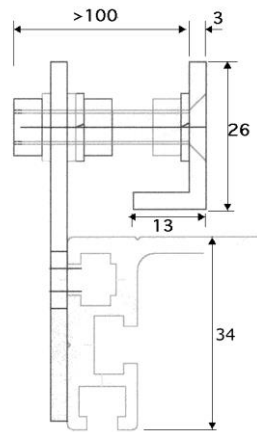
## ■ Standard Guide Rails

(All dimensions mm)

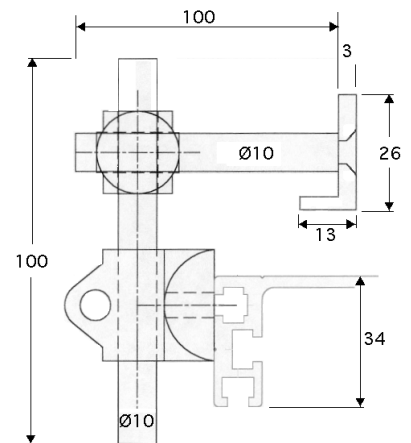
Guide rail material anodised aluminium.



Fixed

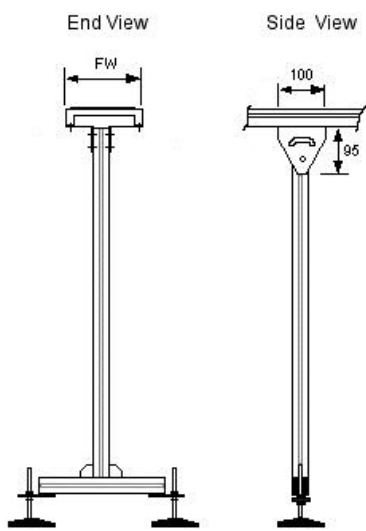


Horizontally adjustable

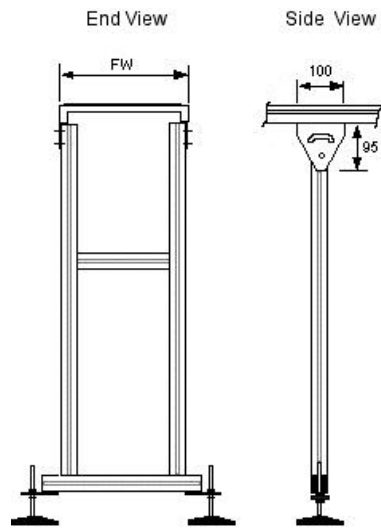


Horizontally and vertically

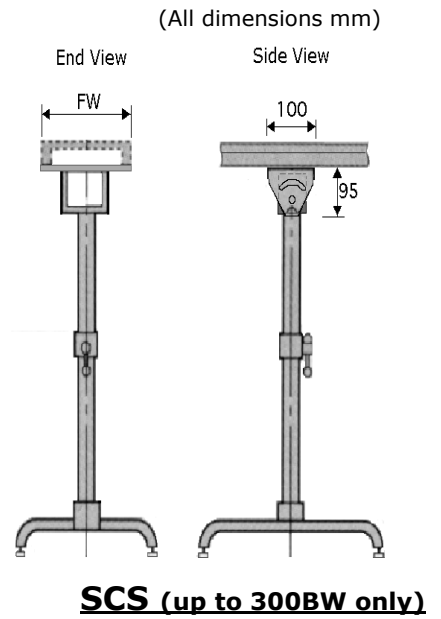
## ■ Supports



**BSH / SHS (50+75BW)**



**BSH / SHS (300-600BW)**



**BSH** = Anodised aluminium 40x40mm. Threaded adjustment +/-50mm, fitted with Ø100mm black polymide base with 120mm x M12 thread or optional Ø75mm nylon wheel plate mounted castor with swivel and brake.

**SHS** = Painted steel or Stainless steel 40x40x1.5mm square tube. Threaded adjustment +/-50mm. Fitted with Ø100mm black polymide base with 120mm x M20 thread or optional Ø75mm nylon wheel plate mounted castor with swivel and brake.

**SCS** = Mild steel zinc plated tubular or stainless steel tubular. Telescopic adjustment of up to +/-300mm. Fitted with Ø40mm nylon base with 50mm x M8 thread