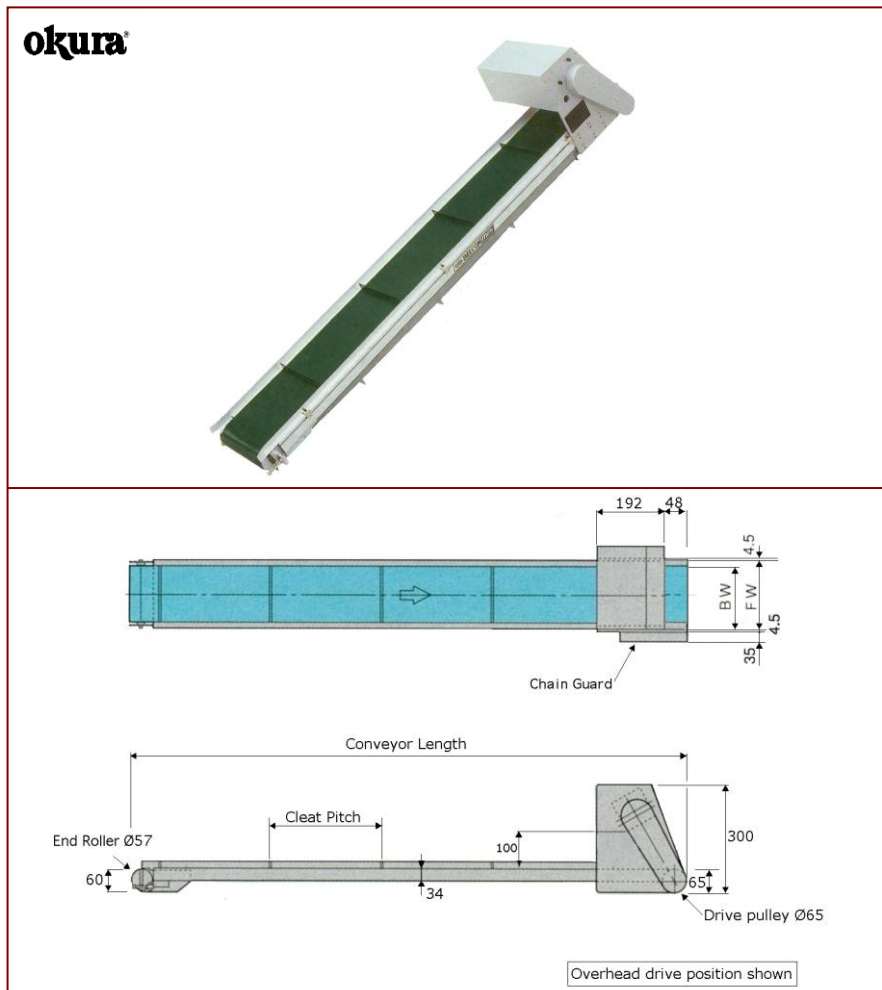


BMK -Cleated Belt Conveyor

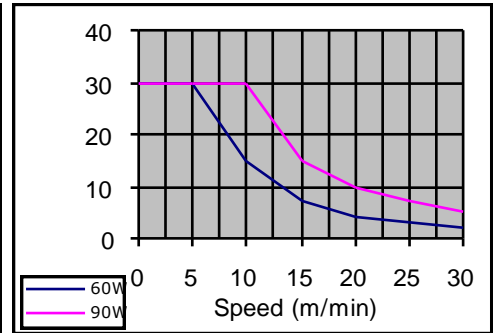
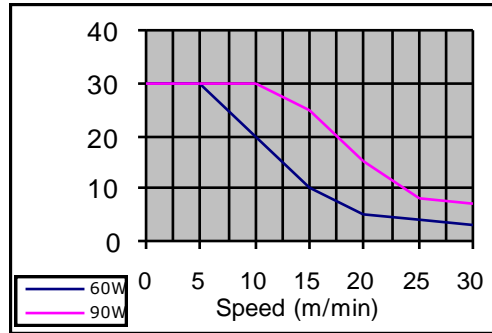
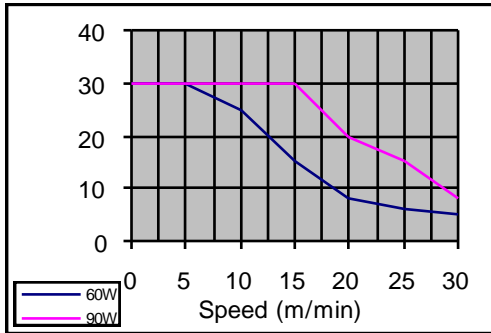


■ Specifications

Belt Widths BW (mm)	90	140	190	240	290	390	490	590	
Frame Width FW (mm)	135	185	235	285	335	435	535	635	
Lengths (mm)	1,000 ~ 4,000								
Available speed range (m/min)	0.8 ~ 30								
Carrier Frame Construction	Anodised Aluminium Extrusion								
Motor Types	60,90 watt 110 + 230v/1 phase 60,90 watt 230v/3phase 60,90 watt 400v/3phase								
Control Box Types	- Fixed speed stop/start - Variable speed stop/start with speed variation knob								
Drive Position	Above or below carrier frame								
Standard Belt Types	2 Ply Green PU with 5 ~ 40mm high lateral cleats @ specified pitch 2 Ply White PU (FDA approved) with 5 ~ 40mm high lateral cleats @ specified pitch								
Standard Guides	25x13x3mm or 40x20x3mm anodised aluminium angle fixed side guides 30 ~ 50 x 5mm stainless steel adjustable side guides. (see overleaf)								
Maximum load per Conveyor (kg)	>30								

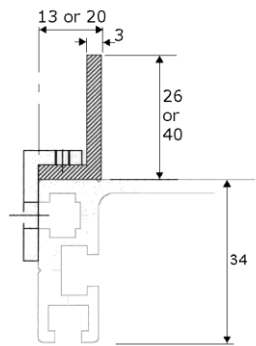


Capacity Graphs

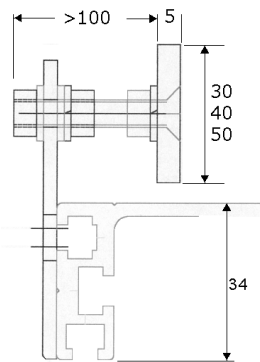


*Graphs provided for guide purposes only. Capacities are approximated using 60 + 90 watt / 230v / 3 phase motors.

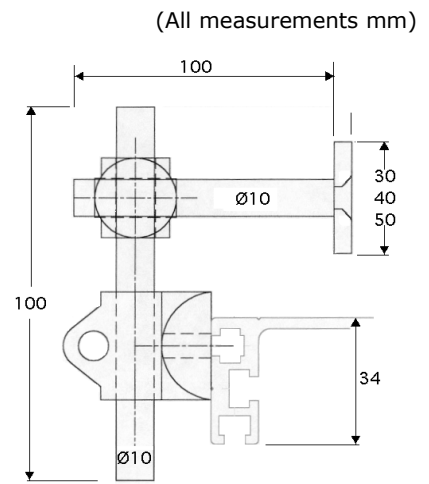
Standard Guide Rails



Fixed
Anodised Aluminium guide.



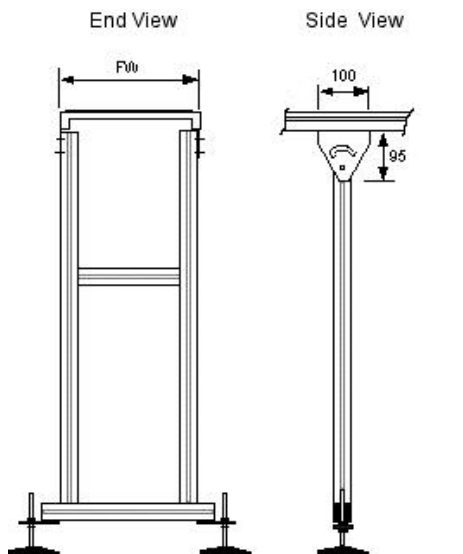
Horizontally adjustable.
Threaded adjustment.
Stainless Steel Guide



Horizontally and vertically adjustable. (clamp fixing)
Stainless Steel Guide

Supports

(All measurements mm)



BSH / SHS (all widths)
BSH =Anodised aluminium 40x40mm.
SHS =Painted steel or Stainless steel
 40x40x1.5mm square tube
 2 x 100mmØ polymide foot with
 +/-50mm threaded adjustment (M12)