

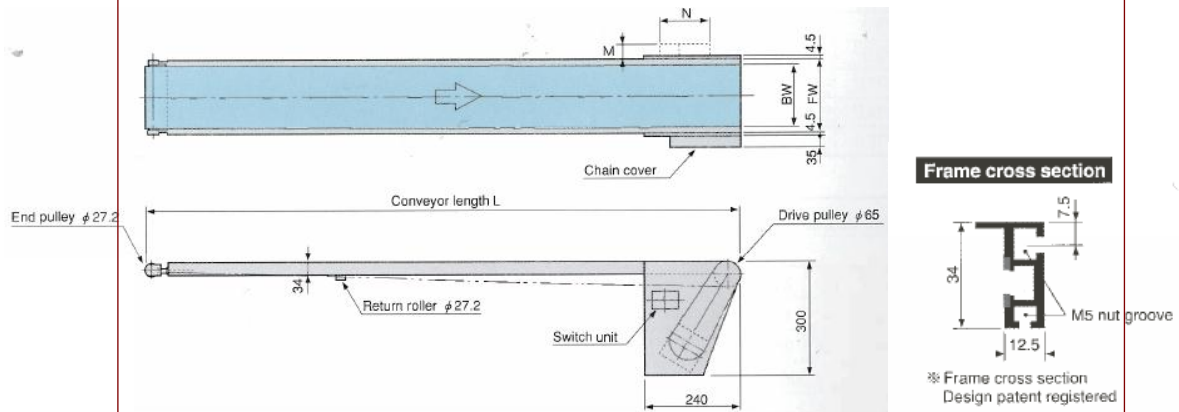
# BHG -Guided Belt Conveyor (Head Drive)

## BHH -Non Guided version (Head Drive)

okura®



Guided Belt

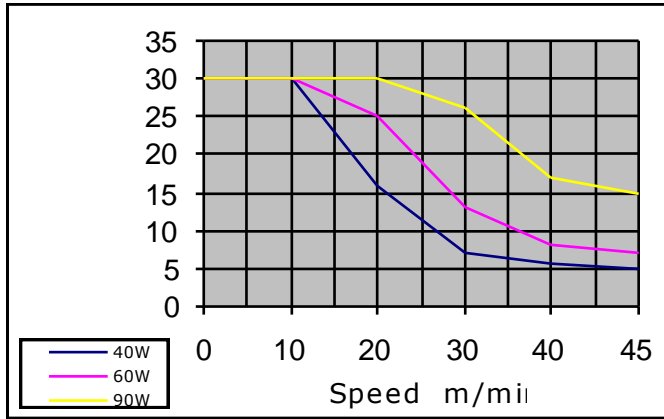


### ■ Specifications

Belt Widths BW (mm)	100	150	200	250	300	400	500	600
Frame Width FW (mm)	135	185	235	285	335	435	535	635
Lengths (mm)	600 ~ 12,000							
Available speed range (m/min)	0.8 ~ 45							
Carrier Frame Construction	Anodised Aluminium Extrusion							
Motor Types	40,60,90 watt 110 + 230v/1 phase 40,60,90 watt 230v/3phase 40,60,90 watt 400v/3phase							
Control Box Types	- Fixed speed stop/start - Variable speed stop/start with speed variation knob (reversing option)							
Drive Position	Below or above carrier frame							
Standard Guided Belt Types	1 or 2 Ply Green or White PU, 1 Ply Green high duty grip face 1 Ply PVC Diamond grey grip face.							
Standard Guides	25x13x3mm anodised aluminium angle fixed and adjustable side guides. (see overleaf)							
Reversible	Yes							
Maximum load (kg)	10kg per M							

[www.conveyors.ie](http://www.conveyors.ie) [www.lvpconveyors.co.uk](http://www.lvpconveyors.co.uk)

■ **Capacity Graph**



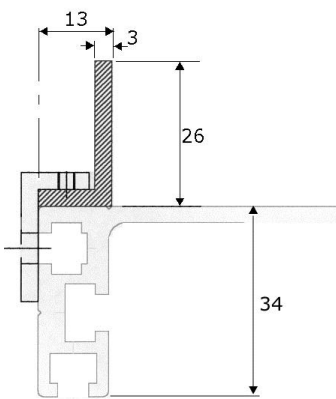
\*Graph provided for guide purposes only. Capacities are approximated using 40, 60 + 90 watt / 230v / 3 phase motors.

Capacities may vary with operating conditions.

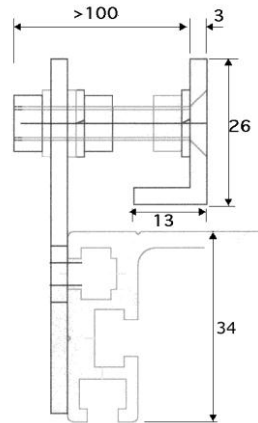
■ **Standard Guide Rails**

(All dimensions mm)

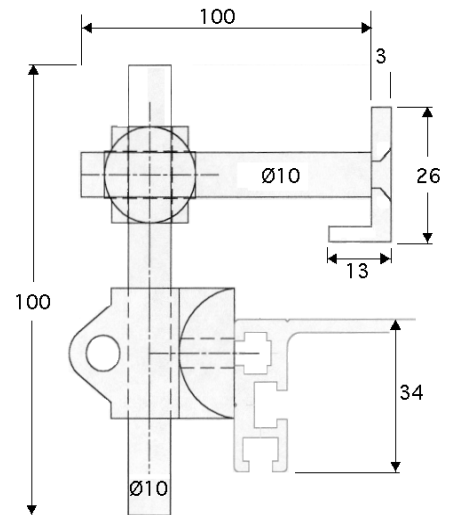
Guide rail material - anodised aluminium.



Fixed



Horizontally adjustable

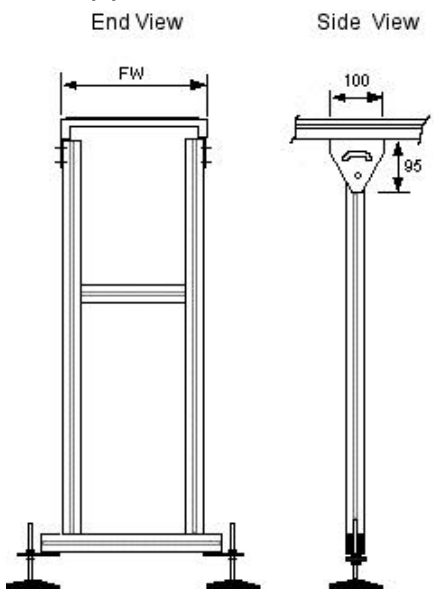


Horizontally and vertically



■ **Supports**

(All dimensions mm)



**BSH** = Anodised aluminium 40x40mm.  
Threaded adjustment +/-50mm.

BSH Supports fitted with Ø100mm black polyamide base with 120mm x M12 thread,  
or optional Ø75mm nylon wheel plate mounted castor with swivel and brake.