



ENDLESS  
SOLUTIONS

*You decide*

**/// Carryline®**



## Moving Things Your Way...

Invented in Sweden in the 1970's, Carryline is the original Flexible slatted conveyor System. Carryline manufacture, from their factory in Sweden, a selection of standard modules which are combined to produce a complete conveyor system in aluminium or stainless steel. The product is transported on an acetal conveyor belt which runs on low friction extruded slide rails.

The Carryline system is based on a combination of drive units, idler units, straight sections, horizontal bends and vertical bends. By adding additional components it is possible to perform specific actions on the product, e.g: hold, reject, rotate, etc.

Components are assembled with simple tools which makes the installation and any future re-configuration to the production line quick and cost effective. No welding is required. With all components manufactured to ISO 9001:2000 all conveyor systems are pre-assembled, tested and CE marked prior to delivery. This ensures high quality and allows for a faster and cost effect installation.

**ENDLESS  
SOLUTIONS**

*You decide*



## ...You Choose

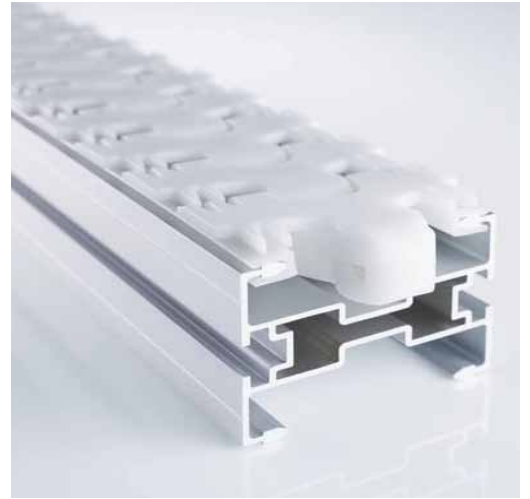
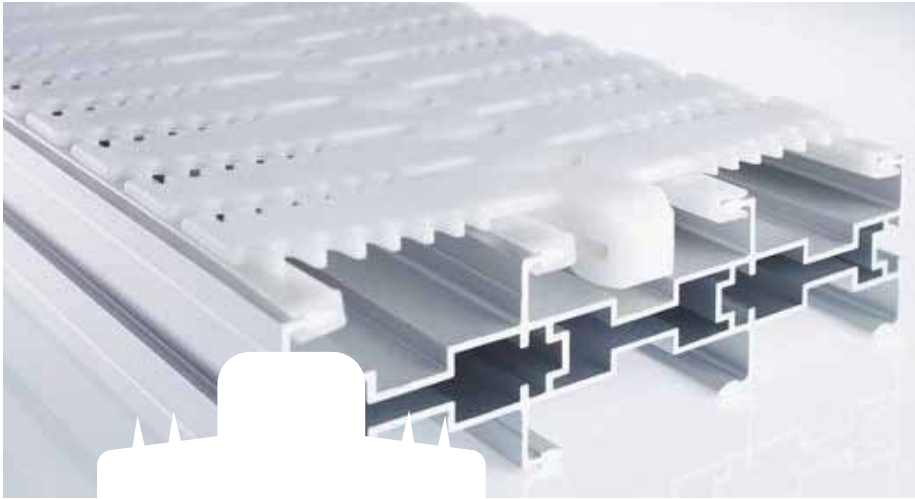
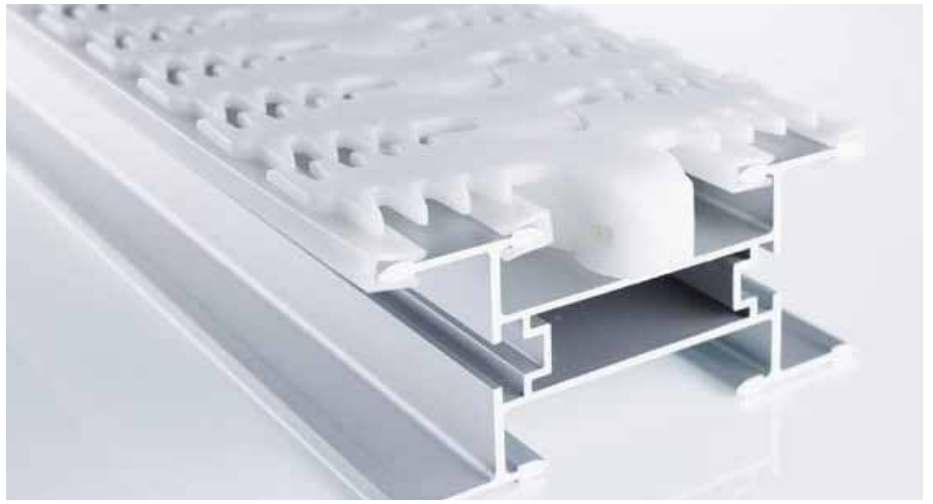
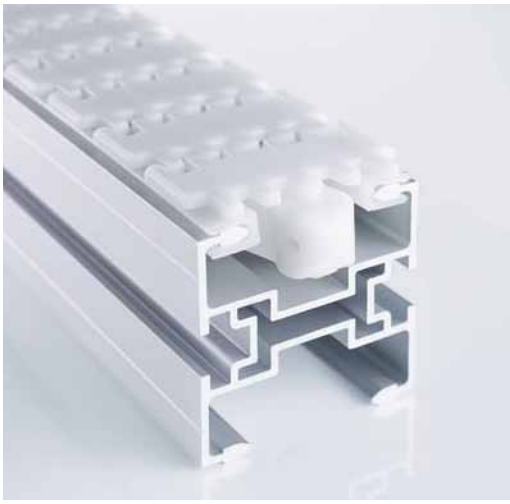
### Benefits Of Carryline:

- Low Lifetime Cost
- Proven Design
- Flexible And Modular system
- Horizontal And Vertical Applications

**Carryline**



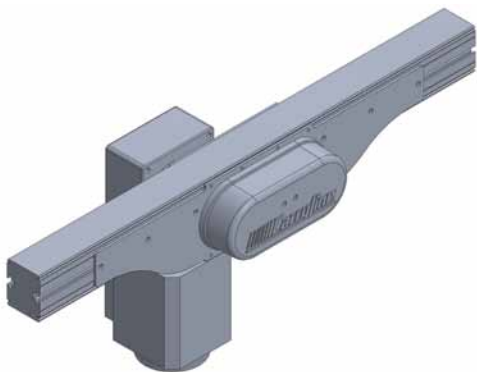
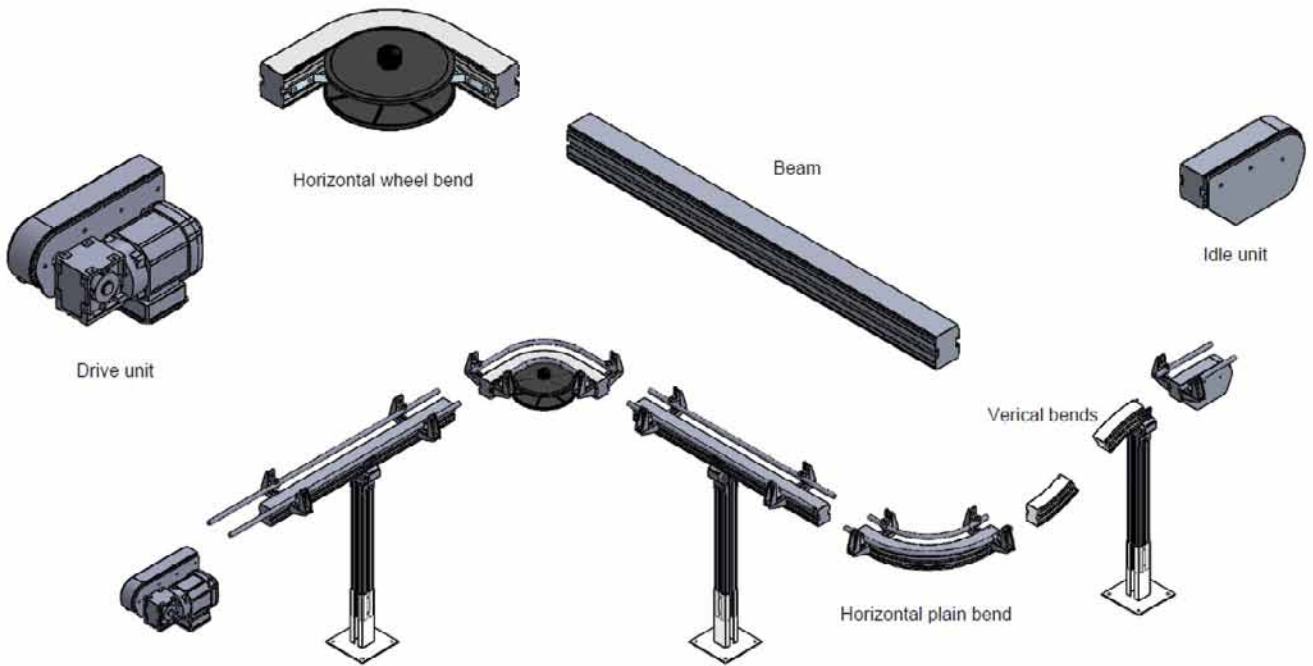




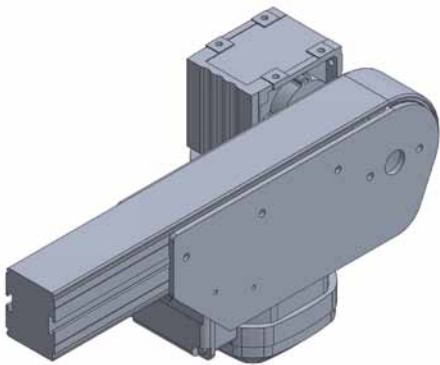
## Endless Solutions... You Decide

With a large library of parts to choose from the Carryline system can be configured to suit nearly any application and still offer a very small footprint. Using the Carryline Online calculator it is possible to assemble and view your preferred system from the ground up.





Centre Drive Unit

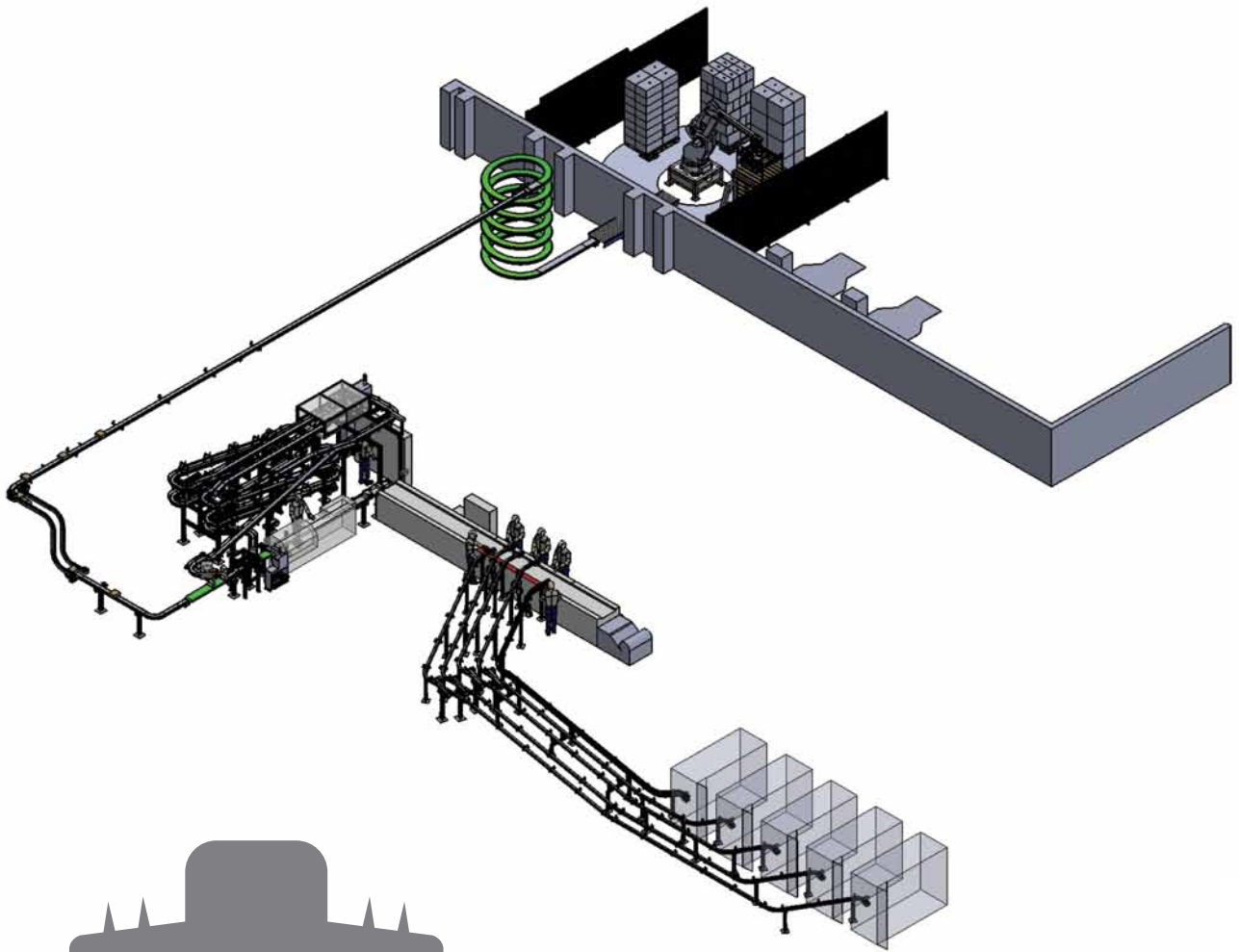


End Drive Unit

## Modular Endless Solutions

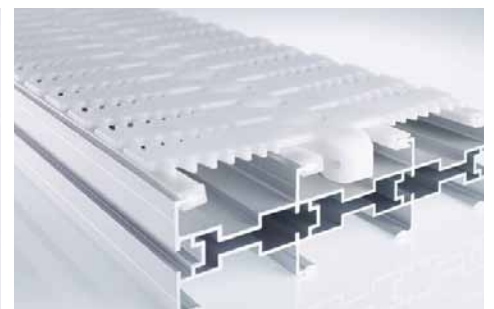
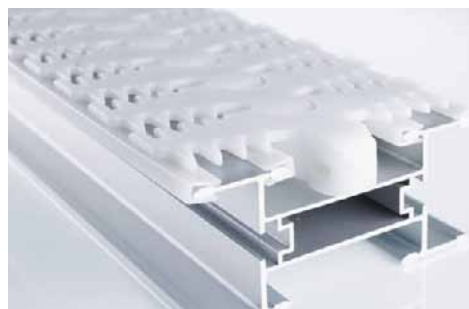
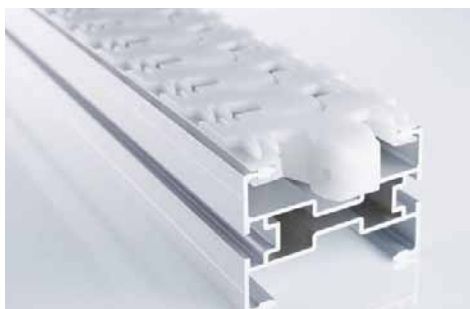
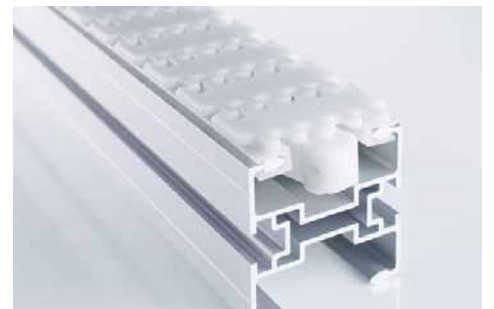
- Drive Station
- Side Guides
- Horizontal Bends
- Chain Options
- Support Stands
- Vertical Bends





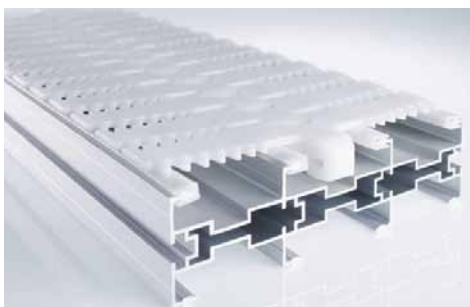
# Endless Solutions... You Decide

The Conveyor system can grow with your Company.





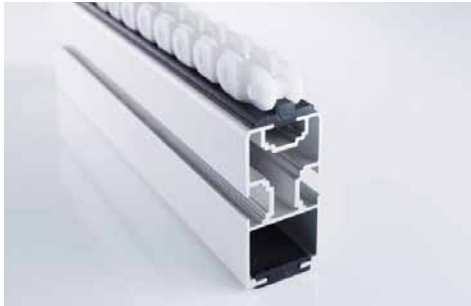
Specifications	Max Line Length Per Drive Unit	Working Temp	Max Recommended Speed	Chain Pitch	Chain Width	Note
<b>Aluminium</b>						
S240(24mm)	15 - 20 M	-20 +60°C	Approx. 50 m/min	25.4mm	24mm	Straight Running
S380(38mm)	15 - 20 M	-20 +60°C	Approx. 50 m/min	25.4mm	38mm	Tightest Bend Radius for 38mm chain: 100mm
S620(62mm)	15 - 20 M	-20 +60°C	Approx. 50 m/min	30mm	62mm	Tightest Bend Radius For 62mm Chain: 141mm
S830(83mm)	15 - 20 M	-20 +60°C	Approx. 50 m/min	38mm	83mm	Tightest Bend Radius For 83mm Chain: 150mm
S140(140mm)	15 - 20 M	-20 +60°C	Approx. 50 m/min	38mm	140mm	Tightest Bend Radius For 140mm Chain: 200mm
S220(220mm)	15 - 20 M	-20 +60°C	Approx. 50 m/min	38mm	220mm	Tightest Bend Radius For 220mm Chain: 600mm
<b>Stainless Steel</b>						
S520(62mm)	15 - 20 M	-20 +60°C	Approx. 50 m/min	30mm	62mm	Tightest Bend Radius For 62mm Chain: 141mm
S530(83mm)	15 - 20 M	-20 +60°C	Approx. 50 m/min	38mm	83mm	Tightest Bend Radius For 83mm Chain: 150mm
S540(140mm)	15 - 20 M	-20 +60°C	Approx. 50 m/min	38mm	140mm	Tightest Bend Radius For 140mm Chain: 200mm
S560(220mm)	15 - 20 M	-20 +60°C	Approx. 50 m/min	38mm	220mm	Tightest Mini Bend Radius For 200mm Chain: 600mm



# Aluminium Conveyors

Suitable for any food grade application. The original family of Carryline Aluminium conveyors is listed below

Carryline S240 (24mm)



A Typical application is the 24mm used as a twin chain conveyor, with a product like a small pallet supported between the 2 chains. The chain is solely for straight-line use.

Carryline S380 (38mm)



Carryline S380 (38mm) is perfect for the handling of small, light goods. The unique design of the chain provides a solid base without gaps between links even when installed around curves.

Carryline S620 (62mm)



S620. At 62mm wide this range handles medium sized products with no compromise to stability.

## CHARACTERISTICS

- Light Weight
- Easy to modify line configurations
- Simple & Minimal maintenance

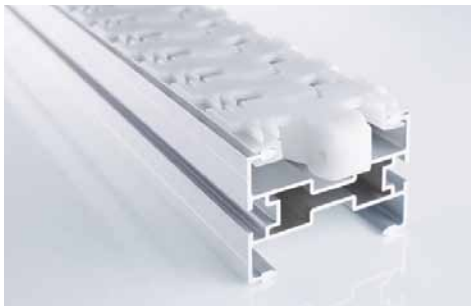
## CHARACTERISTICS

- Easy to reconfigure layouts
- Compact installations
- Provides small radius on curves

## CHARACTERISTICS

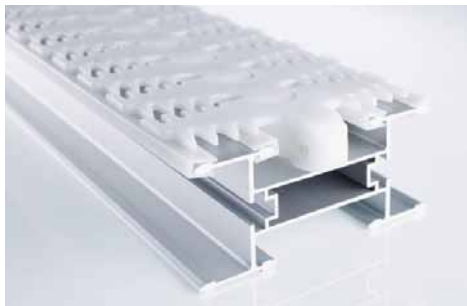
- Flexible in its design
- Quiet
- Cost Effective
- Simple & Low maintenance

Carryline S830 (83mm)



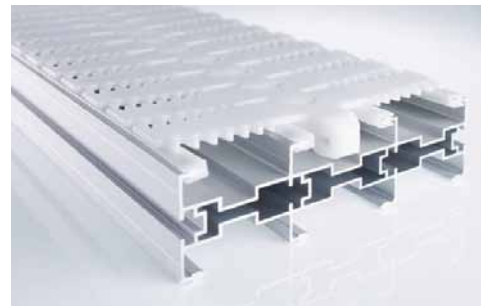
S830. Keeping with the smaller chain widths in the carryline family, the 83mm wide belt is a highly adaptable unit and can be used in horizontal, vertical and side grip applications. The chain can be supplied with many different options, from standard plain top to friction top and rubber grip.

Carryline S140 (140mm)



S140 Carryline is ideal for medium to heavy duty sized loads including lens applications, cardboard cartons and FMCG goods.

Carryline S220 (220mm)



S220. The widest slat chain available from Carryline the S220 is ideal for handling large and heavier goods from Plastic totes to large cardboard cartons.

## CHARACTERISTICS

- Versatile
- Strong
- Minimal maintenance

## CHARACTERISTICS

- Flexible in design
- Strength, durability and light
- Low maintenance

## CHARACTERISTICS

- Strong, yet flexible
- Unsurpassed operational reliability
- Low maintenance



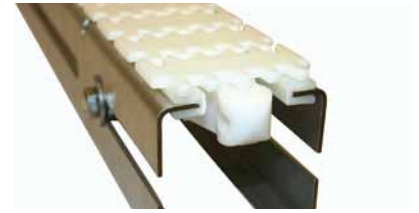
# Stainless Steel Conveyors

Certain segments of trade and industry impose stringent hygiene and cleanliness requirements. Carryline's stainless steel conveyor systems are easy to keep clean. To allow dirt and rinse water to run off, the conveyor beam has a drain-age channel. Naturally enough, all the screws, nuts, shafts and pins in the chain are stainless steel.

Carryline's stainless steel systems are welded together at the joints but, to retain the ability to rebuild without welding, can also be assembled using stainless steel connecting strip.

The dairy, bakery, medical device, glass manufacture, pharma, baby food and engineering industries are those sectors which tend to use stainless steel carryline conveyor systems.

S520 (62mm Wide)

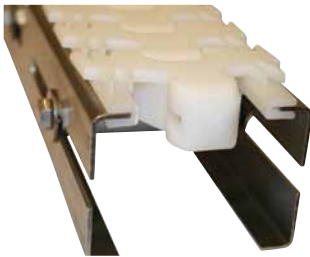


62mm wide. Like the Aluminium version, the pitch is smaller and has a very quiet chain. Carryline S520 is excellent in environments with stringent hygiene requirements.

#### CHARACTERISTICS

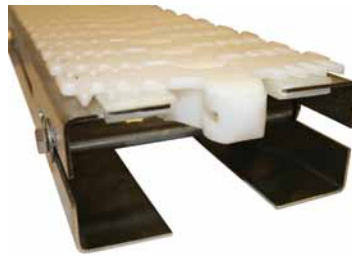
- Versatile & Hygienic
- Cost Effective & Low Maintenance

S530 (83mm Wide)



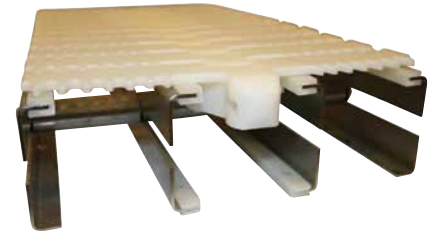
83mm Wide. Carryline S530 increases the product sizes that can be handled on this system. Ideal for those applications with hygiene issues.

S540 (140mm Wide)



140mm Wide. Carryline S540 is ideal for handling larger products requiring more stability whilst being conveyed. Suitable for hygiene applications.

S560 (220mm Wide)



220mm Wide. Carryline S560 is designed for wider and heavier loads, whilst still providing flexibility. Ideal for hygienic applications.

#### CHARACTERISTICS

- Hygienic Strong & Versatile
- Low maintenance

#### CHARACTERISTICS

- Flexible & Hygienic
- Strong & Versatile
- Low maintenance

#### CHARACTERISTICS

- Strong & Versatile
- Hygienic
- Low maintenance

## Vertical Conveyors

Vertical conveying of products is very useful where production takes place on several floor levels or where rapid elevation is essential for a smooth production flow. You can see some images of them on page 2. Our most popular vertical conveyor is the spiral conveyor.

The Carryline Spiral conveyor is available in aluminium and stainless steel.

It's a very compact conveyor to convey items up or down with a small foot print area. Carryline Spiral conveyor is built to your requirements with a choice of chain width, chain type and type of guide rail. All of these are adapted to the product to be conveyed.

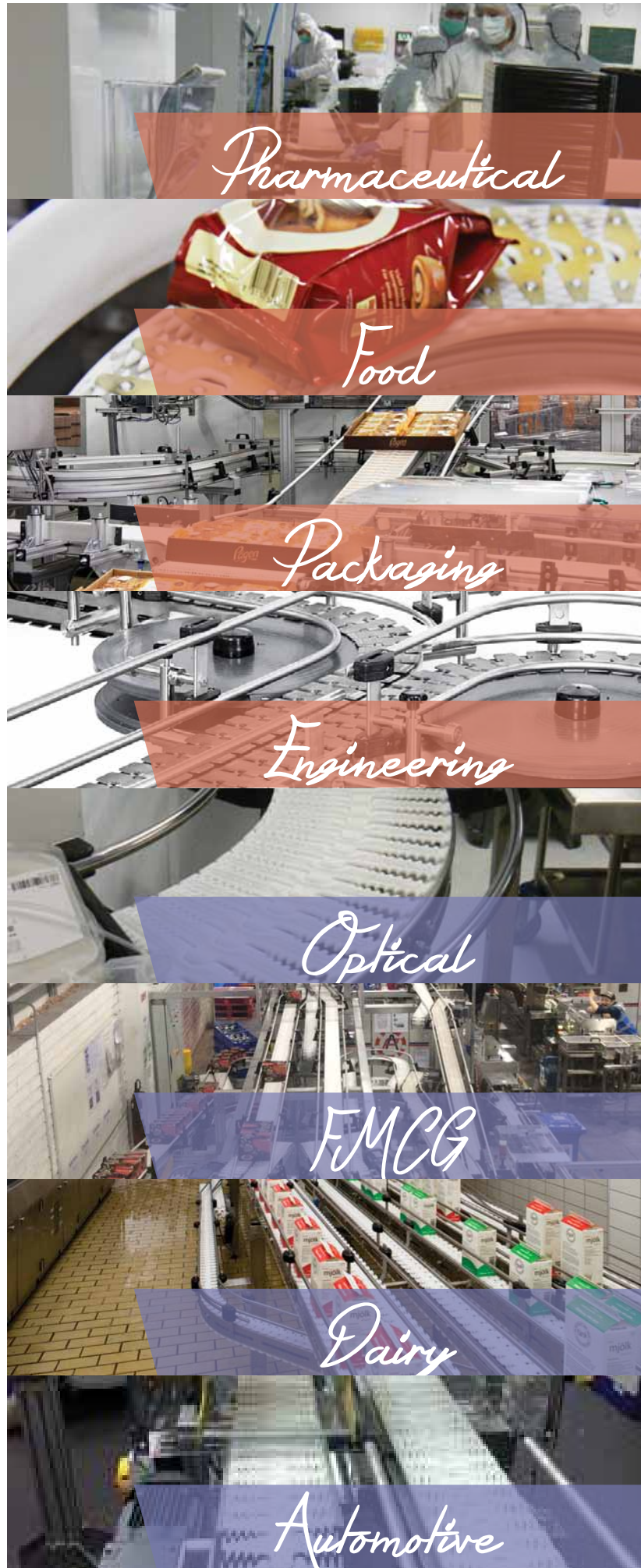
- Chain width, 83 mm, 140 mm, 220 mm
- Min chain diameter, 800 mm
- Max inclination, 10°
- Speed, Up to 60m/min



# ENDLESS SOLUTIONS

*You decide*

# We have a Conveyor Solution for your Industry







## **Ireland**

Unit D7, North City Business Park

**Phone:** + 353 (1) 8643838

**Fax:** + 353 (1) 8644925

**Email:** [sales@conveyors.ie](mailto:sales@conveyors.ie)

**Web:** [www.conveyors.ie](http://www.conveyors.ie)

## **UK**

**Tel:** + 44 1536 747740

**Email:** [sales@lvpcconveyors.co.uk](mailto:sales@lvpcconveyors.co.uk)

**Web:** [www.lvpcconveyors.co.uk](http://www.lvpcconveyors.co.uk)

