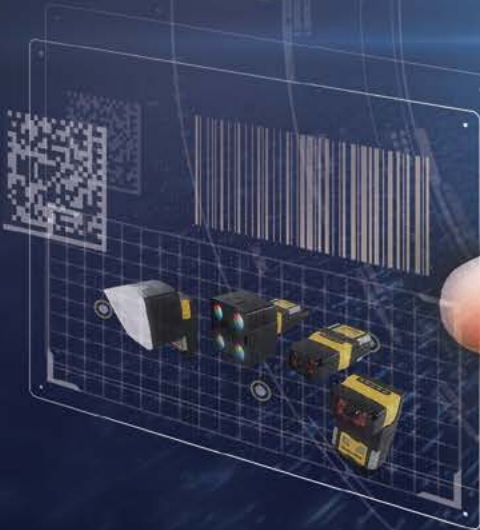


# COGNEX

# BUILD YOUR VISION



# We Make Computers That Can See.

Cognex® is the largest and most recognized global supplier of industrial machine vision.

Cognex systems emulate human eyes and brains. Each system consists of optics, an image sensor, and high-speed electronics that work together to capture an image, then software analyzes that image and makes sense of what's being seen. While this process is second nature to humans, it is a very complex challenge for a computer.

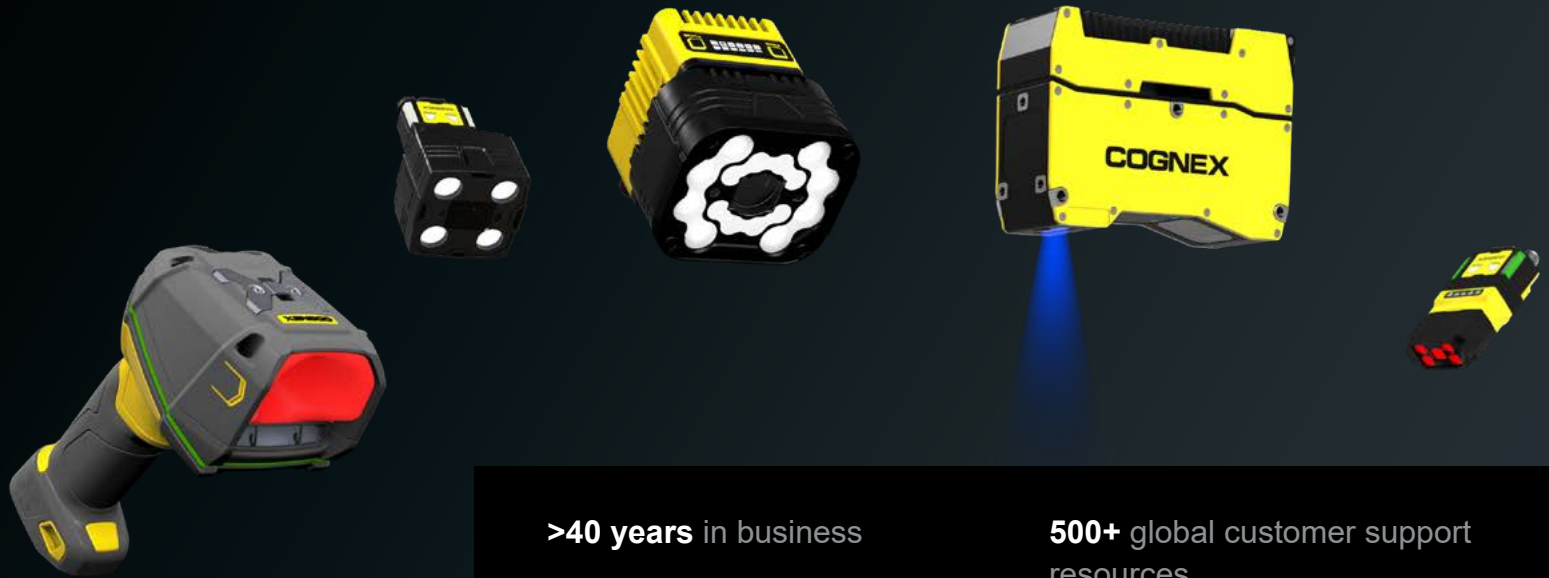
Cognex is focused on solving the toughest problems in machine vision and industrial barcode reading, and we have sold more solutions in these areas than any other company in the world.



# The Global Leader in Machine Vision and Barcode Reading

For over 40 years, Cognex has helped the world's most innovative companies make their manufacturing and distribution faster, smarter, and more efficient.

Cognex machine vision solutions combine hardware and software to capture and analyze visual information. The company's wide range of solutions automates manufacturing and distribution tasks for customers worldwide, improving efficiency and quality in applications like inspecting, identifying, locating, and measuring components, products, and packaging. Cognex products incorporate advanced technologies including artificial intelligence to simplify implementation, increase accuracy, and deliver a faster ROI.



**>40 years** in business

**\$830M+** 2023 revenue

**>60%** revenue from EU & Asia

**25K+** global customers

**400+** channel partners

**500+** global customer support resources

**17%** of revenue into R&D

**>1,100** technology patents

**>8 years** developing AI for industrial machine vision

# Machine Vision

Over 1 billion products are made every day using machine vision. Whether verifying the fill levels of soda bottles traveling on a conveyor, reading oil-stained DPM codes on automotive parts, or positioning touch screens on smartphones to micron-level accuracy, machine vision technology performs highly-detailed tasks on high-speed production lines.

Cognex machine vision products help companies:

- Optimize quality
- Minimize waste
- Maximize throughput



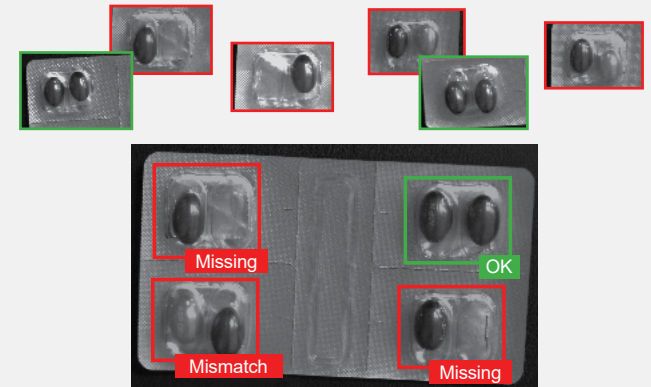
# AI Technology

Cognex AI-based solutions learn to spot patterns and anomalies from example images to solve complicated tasks and provide consistency and speed that aren't possible with manual inspection.



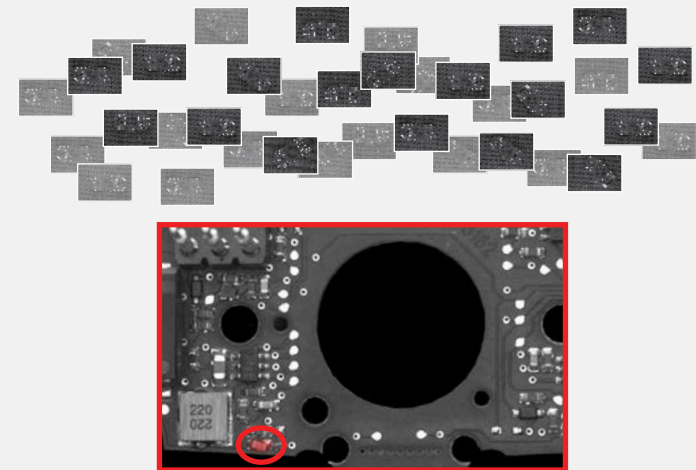
## Edge learning

Subset of AI in which processing takes place on-device, or "at the edge," using a pre-trained set of algorithms. This technology is simple to setup, requiring smaller image sets and shorter training and validation periods than traditional deep learning.



## Deep learning

Designed to automate complex or highly customized applications. This technology enables users to analyze vast image sets quickly and efficiently, while accurately differentiating between acceptable and unacceptable anomalies.



# 2D Vision Sensors and Systems

## In-Sight 3800 Series

Designed for high-speed applications, In-Sight 3800 delivers a fully integrated solution for manufacturing automation. Beyond speed, this powerful system is embedded with the latest vision technologies and offers high flexibility and high resolution, allowing users to maximize throughput, scale their solution, and run more accurate inspections.



### TOOLSET



### RESOLUTION

Up to 16MP

### FEATURES



## In-Sight 2800 Series

The In-Sight 2800 vision system combines edge learning technology with traditional rule-based vision to solve a range of error-proofing tasks. From presence/absence detection to sortation and character reading applications, this fully integrated vision system offers an easy-to-use solution for automating inspections.



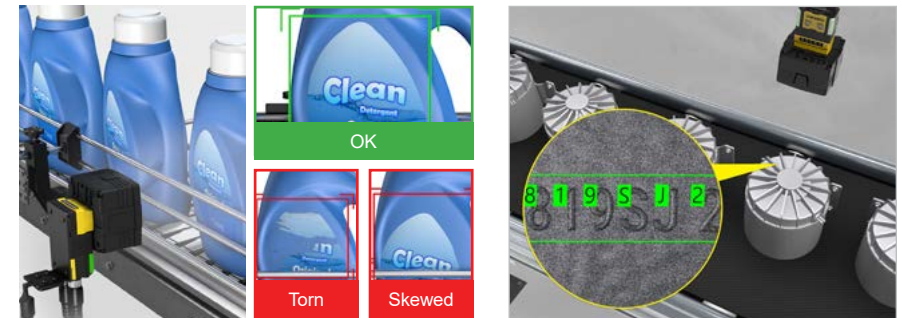
### TOOLSET



### RESOLUTION

Up to 2MP

### FEATURES

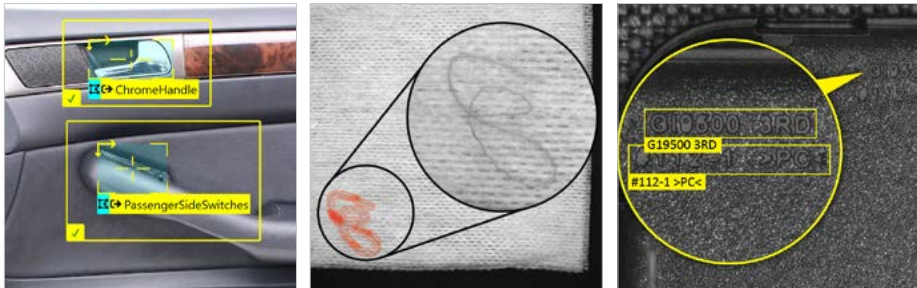


## In-Sight D900 Series

The In-Sight D900 vision system leverages advanced AI-based tools to solve challenging OCR, assembly verification, and defect detection tasks. Processing takes place on-device, which eliminates the need for a PC, simplifying application deployment.



TOOLSET	RESOLUTION	FEATURES
	<b>Up to 5MP</b>	
DL		Integrated Lighting Autofocus IP67 SD

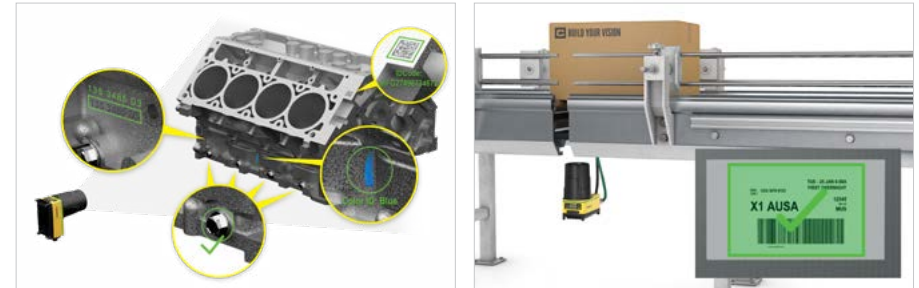


## In-Sight 9000 Series

Rugged, ultra-high-resolution standalone vision system solves high-accuracy part location, measurement, and inspection applications. Line scan and area scan image acquisition options are available for imaging large, continuously moving or stationary objects.



TOOLSET	RESOLUTION	FEATURES
	<b>Area Scan: Up to 12MP; Line Scan: Up to 32MP</b>	
		IP67 SD



## In-Sight 8000 Series

Ultra-compact standalone vision system delivers industry-leading performance in the micro form factor of a typical GigE vision camera.



TOOLSET	RESOLUTION	FEATURES
	<b>Up to 5MP</b>	
		PoE HDR+

## In-Sight 7000 Series

Combines modular integrated lighting with powerful vision tools in a compact footprint to deliver fast, accurate inspections on space-constrained production lines.








TOOLSET	RESOLUTION	FEATURES
	<b>Up to 5MP</b>	
		Integrated Lighting Autofocus IP67 HDR+

## In-Sight SnAPP Series

In-Sight SnAPP vision sensors offer the performance of multiple laser sensors in a single device. Using pre-trained AI and vision-based detection, these sensors exceed the capabilities of conventional sensors to deliver more accurate inspections and more reliable machine performance. Designed for high ease of use, they allow users to quickly solve common quality and process control tasks, with no experience needed.



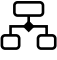




TOOLSET	RESOLUTION	FEATURES
 VIDEEL	Up to 1.6MP	 Integrated Lighting  Autofocus  IP67  PoE



## In-Sight 2000 Series

Leveraging rule-based vision tools, In-Sight 2000 vision sensors solve error-proofing tasks with consistent or predictable anomalies. They offer robust programming options, giving intermediate users more control in application development while providing the flexibility to adapt to any production line.



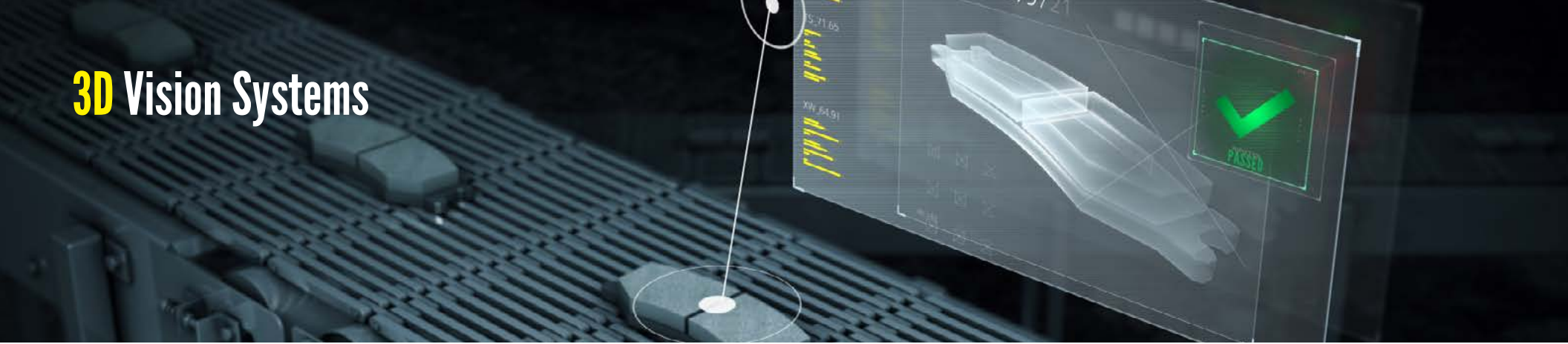
TOOLSET	RESOLUTION	FEATURES
	Up to 1.2MP	 Integrated Lighting  Autofocus  IP65  PoE

# In-Sight Vision Software



In-Sight Vision Suite software is common across all In-Sight products and offers two development environments — EasyBuilder® and spreadsheet. With point-and-click training, the intuitive EasyBuilder interface is ideal for setting up simple or common jobs, while the robust spreadsheet environment provides additional power and flexibility for advanced or customized applications.

# 3D Vision Systems



## In-Sight L38 Series

Powered by AI, the In-Sight L38 is a next-generation 3D vision system that allows manufacturers to perform highly reliable inspections. Using a combination of embedded AI, powerful optics, and industry-proven vision technology, the system captures detailed 3D images to detect subtle features and measure them against pass/fail thresholds.

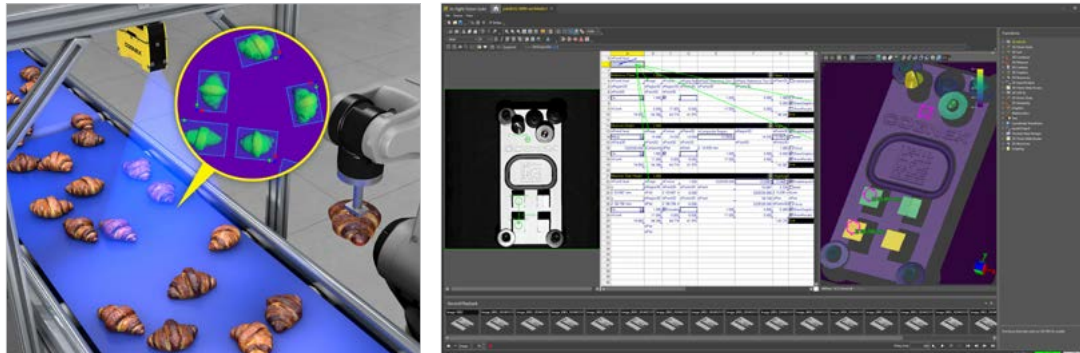
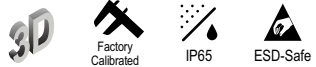
### TOOLSET



### RESOLUTION

1920 points

### FEATURES



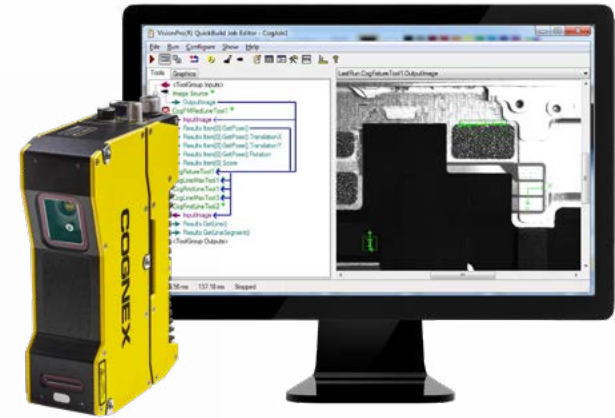
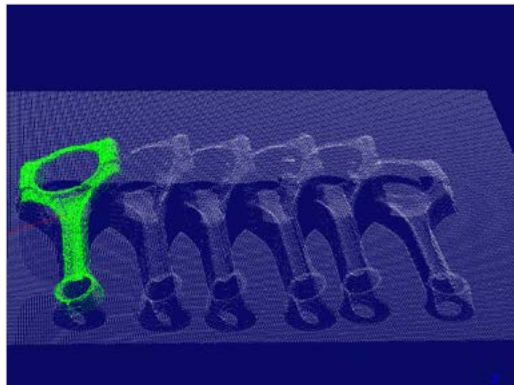




## 3D-A5000 Series

The 3D-A5000 is a state-of-art area scan camera that captures high-resolution 3D point cloud images in less time than alternative methods. Using unique 3D imaging technology, it solves challenging assembly verification, in-line metrology, and robotic guidance applications.

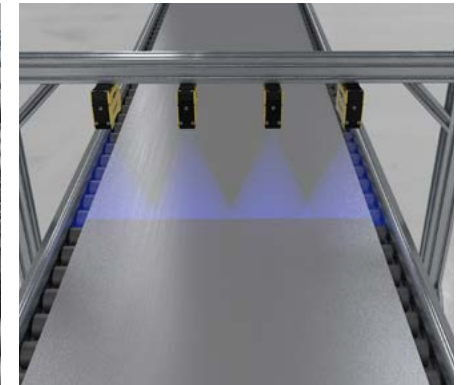
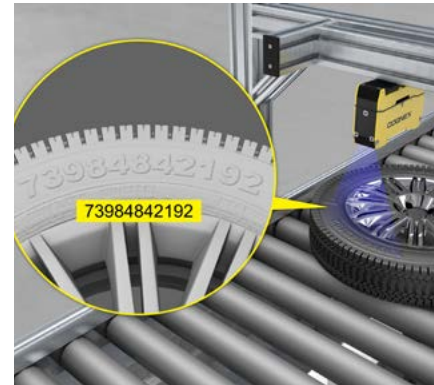
TOOLSET	RESOLUTION	FEATURES
	<b>1.5 million points</b>	



## 3D-L4000 with VisionPro

The 3D-L4000 with VisionPro is a powerful laser displacement sensor that performs fast, accurate 3D inspections, measurements, and optical character reading. Backed by powerful PC-based software, the solution provides ultimate programming control for solving highly customized tasks and those that require the fastest processing.

TOOLSET	RESOLUTION	FEATURES
	<b>960-1920 points</b>	

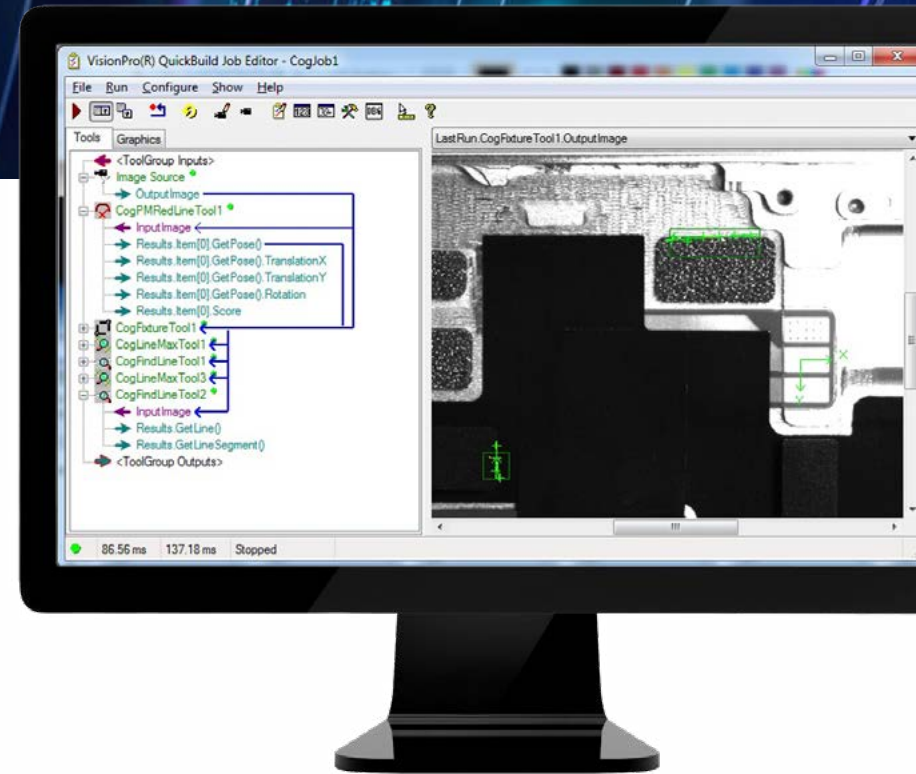


# Vision Software

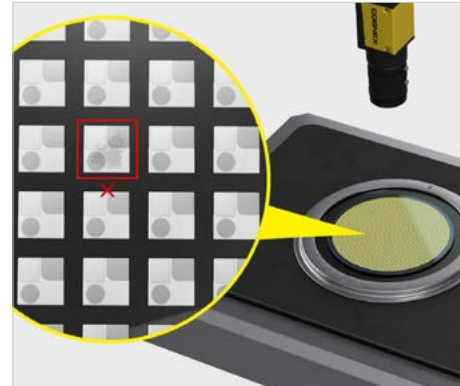
## VisionPro

VisionPro® is a PC-based software that combines best-in-class vision technologies in a graphical programming environment. Powerful enough to solve the most challenging vision tasks, it enables rapid deployment of highly-customizable applications, from geometric object location and inspection to identification, measurement, and alignment. With a future-oriented design that includes rule-based tools and AI capabilities, this flexible software supports both current and future vision needs.

### TOOL SET



Extensive library of AI- and rule-based tools tackle your toughest vision challenges



# Barcode Reading

Nearly every product uses a 1D or 2D barcode to automate and simplify identification and data capture. The basic process in reading codes is to 1) illuminate the code, 2) locate the code, and 3) extract the data. Businesses must be able to read codes quickly and accurately for maximum efficiency and throughput.




Cognex image-based barcode readers decode 1D and 2D codes, from printed labels to the hardest to read direct part mark (DPM) codes, and deliver industry-leading read rates. Advanced technology, modular options, and easy setup help to reduce costs, optimize performance, increase throughput, and control traceability.



# Fixed-Mount Barcode Readers

## DataMan 380 Series

High-resolution barcode reader with powerful decoding technology designed for high-speed lines.

POWER	RESOLUTION	CONNECTIVITY
 15X	Up to 16MP	 

### FEATURES

 Hotbars	 PowerGrid	 1D/2D QuickSort	 High Speed Liquid Lens	 EI	 Laser Aimer	 HDR+
--------------------------------------------------------------------------------------------	-----------------------------------------------------------------------------------------------	-----------------------------------------------------------------------------------------------------	------------------------------------------------------------------------------------------------------------	----------------------------------------------------------------------------------------	-------------------------------------------------------------------------------------------------	------------------------------------------------------------------------------------------



## DataMan 370 Series

Delivers superior read performance for the broadest range of applications, including multi-code and multi-symbology applications.

POWER	RESOLUTION	CONNECTIVITY
 5X	5MP	 

### FEATURES

 Hotbars	 PowerGrid	 High Speed Liquid Lens	 EI	 Laser Aimer	 HDR	
----------------------------------------------------------------------------------------------	-------------------------------------------------------------------------------------------------	--------------------------------------------------------------------------------------------------------------	------------------------------------------------------------------------------------------	---------------------------------------------------------------------------------------------------	-------------------------------------------------------------------------------------------	---------------------------------------------------------------------------------------



## DataMan 280 Series

Premium decoding technology in a compact form factor.

### POWER



4X

### RESOLUTION

Up to 2MP

### CONNECTIVITY



### FEATURES



Hotbars



PowerGrid



High Speed  
Liquid Lens



EI



HDR



## DataMan 80 Series

Compact reader ideal for decoding 1D/2D label-based codes and direct part marks in confined spaces.

### POWER



2.5X

### RESOLUTION

1.6MP

### CONNECTIVITY



### FEATURES



Hotbars



PowerGrid



High Speed  
Liquid Lens



EI



HDR



## DataMan 580 Fixed-Mount Barcode Reader for Tunnel Applications

Enables greater throughput while maintaining high read-rates and short gaps between packages on high-speed lines using a 9MP imager and advanced decoding algorithms.



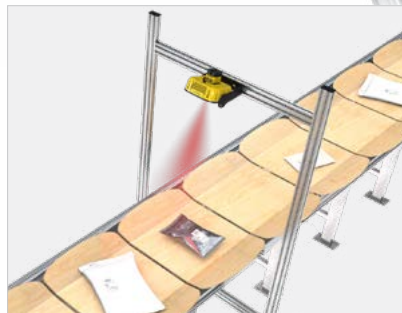
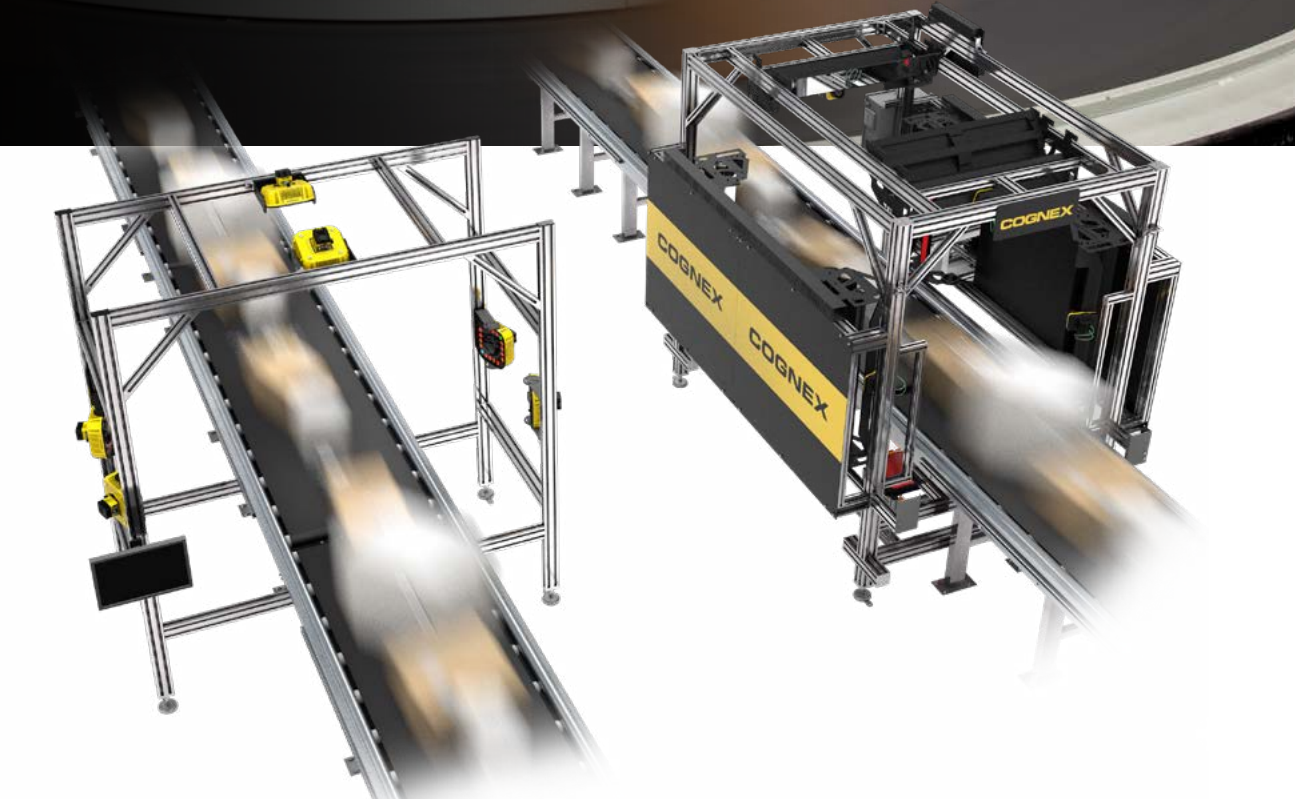
# Improve Throughput and Efficiency with Modular Vision Tunnels

Cognex Modular Vision Tunnels (MVT) quickly read codes on packages and parcels and instantly communicate data to facility systems. These solutions empower retail distribution, e-commerce fulfillment, and parcel processing organizations to:

- **Achieve read rates of 99.9%** with powerful decoding capabilities
- **Maximize warehouse throughput** at lower operational costs
- **Improve traceability** across a product's journey throughout the warehouse
- **Scale operations efficiently** while reducing downtime and risk

MVTs are available in a series of modular designs including a top-side tunnel, 2-3 sided tunnel, or 5-6 sided tunnel, making it easy to add and subtract readers, vision tools, or other modules if your requirements change.

These flexible solutions serve a range of belt widths, based on common OEM conveyor sizes, as well as a range of barcode sizes.



Top-side MVT



3-Sided MVT



5- and 6-Sided MVT

# Handheld Barcode Readers



## DataMan 8700DX

Offers cutting-edge performance and operator feedback on the toughest DPM and label-based codes while withstanding harsh oils, dirt, and water.

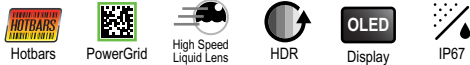
### RESOLUTION

1.6MP

### CONNECTIVITY



### FEATURES



## DataMan 8700DQ

Decodes well-marked DPM codes with IP67-rated housing and an OLED display screen for easy setup and use.

## DataMan 8700LX

Decodes well-marked 1D and 2D label-based codes, with an OLED display screen for easy setup and use.

## DataMan 8700HD

Decodes well-marked 1D and 2D label-based codes as small as 2 mil in size.

### RESOLUTION

1.6MP

### CONNECTIVITY



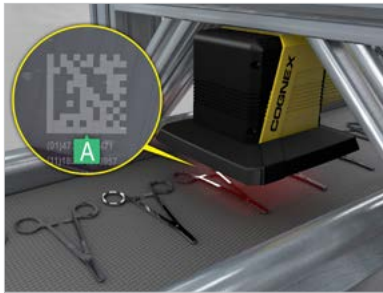
### FEATURES



# Barcode Verifiers

## DataMan 475V Series Inline Verifier

Grades 1D, 2D, and DPM codes from a fixed position on the production line.



Label and DPM models

## DataMan 475VS Series Offline Verifier

Grades 1D, 2D, and DPM codes as small as 1 mil in size on a wide range of parts with an adjustable height stand.



Label

DPM

HD

[www.cognex.com/verifiers](http://www.cognex.com/verifiers)

## In-Sight 7905V Series Verifier

Combines powerful vision and verification technology to perform multiple tasks at once including grading barcode quality, reading text, and verifying code placement on parts.



Label and DPM models

## DataMan 8072V Series Handheld Verifier

Grades the most difficult DPM codes with 30/45/90-degree angle lighting options.



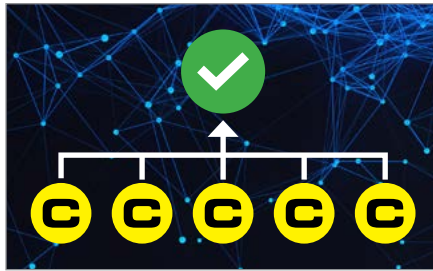
# Cognex Edge Intelligence



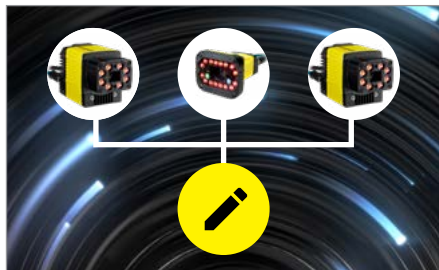
The Cognex Edge Intelligence (EI) platform provides visibility into what is happening on your line, transforming big data into smart data for greater efficiency. EI is fully integrated with select Cognex products and logistics tunnels to streamline device management. Users can access visualization and diagnostics tools to identify and resolve issues quickly.



Connect via web browser



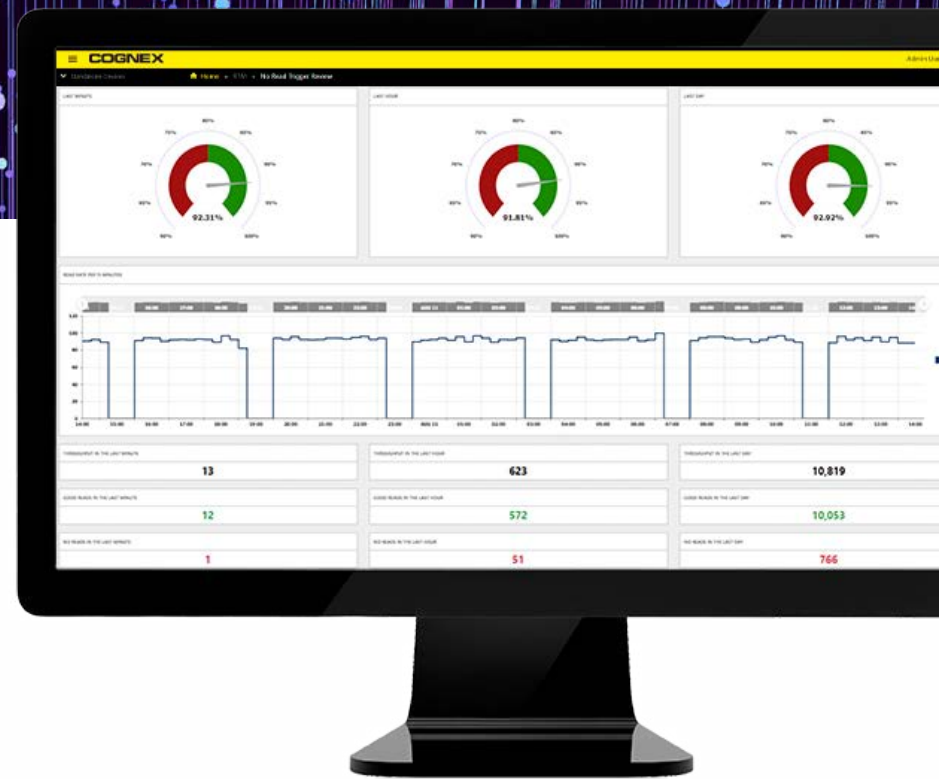
Automatically discover and subscribe to Cognex products



Configure multiple devices at once



Securely store and share data

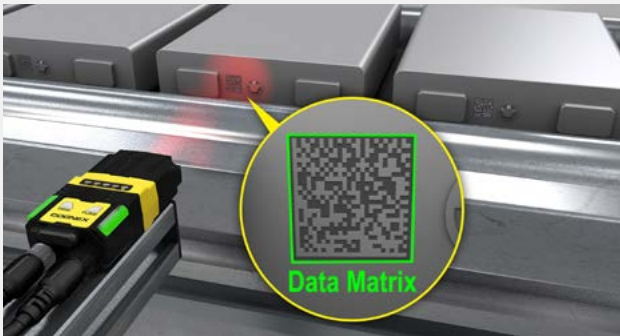


Performance dashboards, read rate trends, setup, commissioning, and calibration tools

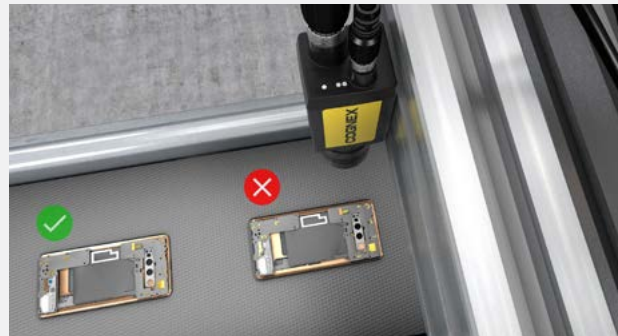


# The Most Industry Experience

Cognex serves hundreds of different markets. Here are some of the largest and fastest-growing industries for machine vision and industrial barcode reading.



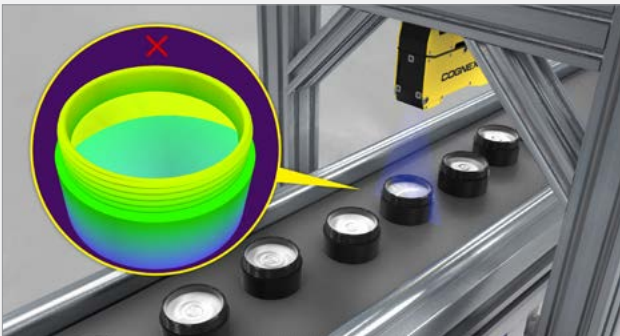
Automotive



Consumer electronics



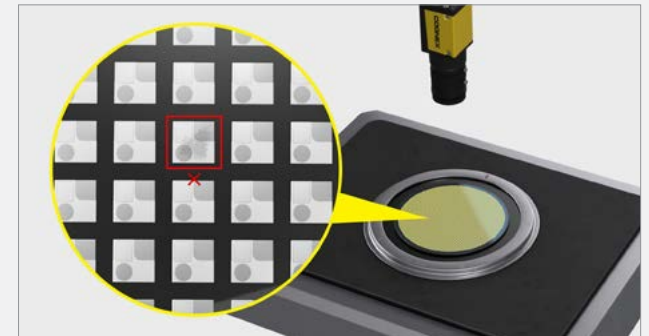
Food & beverage



Consumer products



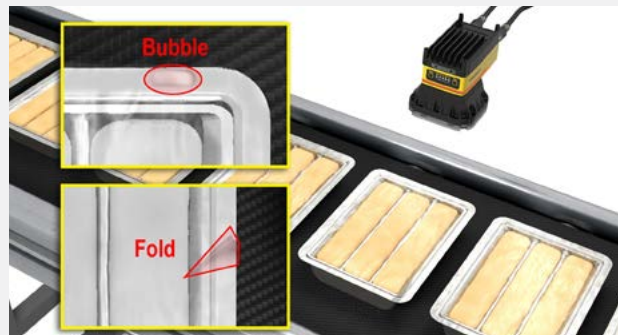
Logistics



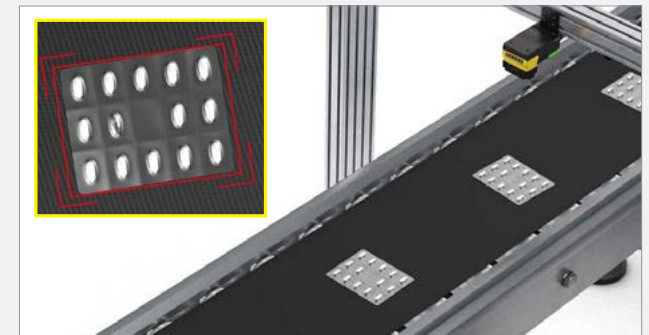
Electronics



Life sciences



Packaging



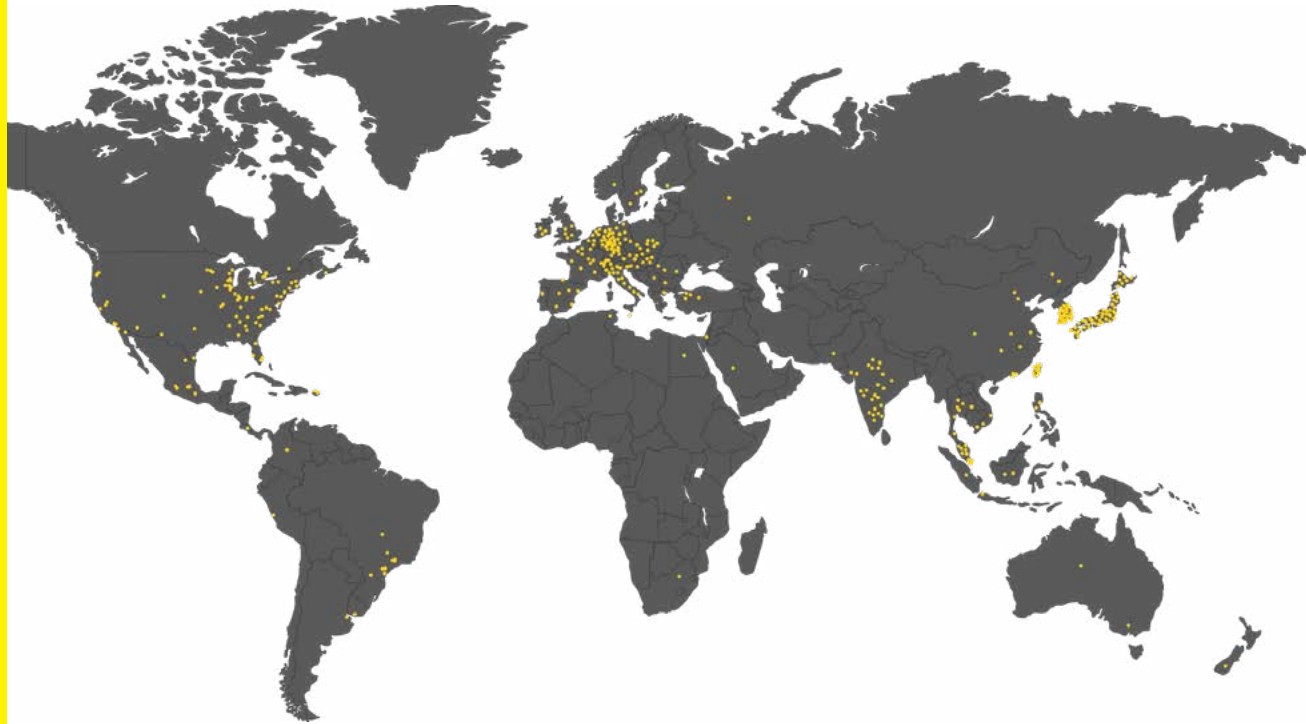
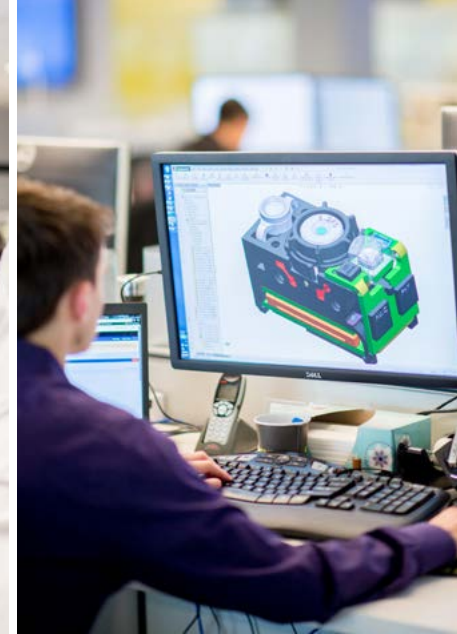
Pharmaceutical

# Cognex Global Services

Cognex serves an international customer base from offices located throughout the Americas, Europe, and Asia and through a global network of highly-trained partners, system integrators, and distributors.

From development to deployment, Cognex is there to get your vision systems up and running as fast as possible. Whether you're considering machine vision for the first time or are already an expert user, Cognex global services provide the expertise to help your organization succeed.

[cognex.com/support/cognex-services](https://cognex.com/support/cognex-services)



**Offices in 20+ Countries**

**500+ Global Partners  
in 30 Countries**



## Technical Support

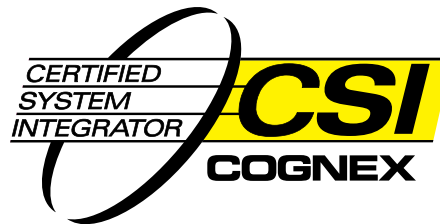
All Cognex products come with complimentary technical support during and after installation from experienced vision engineers that you can access by phone, email, and online knowledge database. Cognex engineers can remotely connect to your system to help solve your problem. Cognex vision systems come with a one-year limited warranty and are covered by our Hot Swap Program, which guarantees shipment of a permanent replacement system within 2 business days of a reported failure.

[cognex.com/support](https://cognex.com/support)

## The Most Extensive Vision Network

Around the globe, wherever you find manufacturing, you can find a Cognex representative! Our extensive network of Cognex certified partners consist of the most experienced Automation Service Providers (ASPs) and Certified System Integrators (CSIs) in the industry.

Our ASPs are locally-based vision suppliers offering a wide range of factory automation products, support and services to Cognex customers around the world. Additionally, when it comes to more complex automation installations that require highly skilled resources, our CSIs offer an extensive range of services including completely customized automation solutions to integration into pre-existing solutions.





## COGNEX TRAINING

We want to make you the most effective vision professional at your organization. That's why Cognex offers a variety of training options dedicated to increasing organizational expertise and optimizing your manufacturing processes. Through our global training program, we deliver a variety of courses for beginners to advanced users that range from the fundamentals of machine vision to real-world applications for complex tools.

### Customized, Anytime

For groups of six or more, Cognex classes are available at your facility so that your team can work and learn together in your operating environment. For convenience, the Cognex online training portal lets you access on-demand training videos of Cognex courses, participate in virtual classes and tutorials, and view application examples.

By combining key training classes and system integration services into training service packages, Cognex helps focus and accelerate your learning.

[cognex.com/training](https://cognex.com/training)



**10,000+**  
Attendees Annually



**1000+**  
Worldwide classes



**18**  
Different languages

# What Does Culture Mean at Cognex?

## Work Hard

We are passionate about our work. We work hard because we are empowered to make a difference.

## Play Hard

Jump out of an airplane with our CEO? Get in a paint fight with your coworkers? Launch pumpkins from a catapult for prizes? Or just drink beer with friends at an after-work social. Cognex goes all out to reward working hard with creative opportunities to play hard.

## Move Fast

The sooner we test that new idea, the sooner we can bring it to market to help our customers meet their goals. Staying nimble keeps work interesting, and keeps Cognex innovating.



# COGNEX

[www.cognex.com](http://www.cognex.com)

## COGNEX

Companies around the world rely on Cognex vision and barcode reading solutions to optimize quality, drive down costs and control traceability.

**Corporate Headquarters One Vision Drive Natick, MA 01760 USA**

### Regional Sales Offices

#### Americas

North America +1 844 999 2469  
Brazil +55 11 4210 3919  
Mexico +800 733 4116

#### Europe

Austria +43 800 28 16 32  
Belgium +32 289 370 75  
Czechia +420 800 023 519  
France +33 1 76 54 93 18  
Germany +49 721 958 8052  
Hungary +36 800 80291

Ireland +353 21 421 7500  
Italy +39 02 3057 8196  
Netherlands +31 207 941 398  
Poland +48 717 121 086  
Romania +40 741 041 272  
Spain +34 93 299 28 14  
Sweden +46 21 14 55 88  
Switzerland +41 445 788 877  
Turkey +90 216 900 1696  
United Kingdom +44 121 29 65 163

#### Asia-Pacific

Australia +61 2 7202 6910  
China +86 21 5875 1133

India +91 7305 040397  
Indonesia +62 21 3076 1792  
Japan +81 3 5977 5400  
Korea +82 2 539 9047  
Malaysia +6019 916 5532  
New Zealand +64 9 802 0555  
Phillipines +63 2 8539 3990  
Singapore +65 3158 3322  
Taiwan +886 02 7703 2848  
Thailand +66 6 3230 9998  
Vietnam +84 98 2405167

© Copyright 2024, Cognex Corporation. All information in this document is subject to change without notice. All Rights Reserved. Cognex, In-Sight, EasyBuilder, VisionPro, and DataMan are registered trademarks of Cognex Corporation. All other trademarks are property of their respective owners. Lit. No. CPG-EN-03-2024